

# LED ET8-2150-17

Lamp Class: T8 (4 ft.)

5000K  
cct

## Product Description

**LED ET8-2150-17** delivers superior brightness, valuable energy savings and long lasting performance. **EURI** 4 ft. Direct Replacement T8 LED lamp is ideal for offices, conference rooms, hotels, academic complexes, research buildings, medical facilities and commercial stores. Built-in driver reduces maintenance expenses. This LED T8 Frosted Glass deliver splendid light distribution without compromising brightness or generating undesirable glare. Available in 4000K Bright White and 5000K Cool White. Enjoy features such as: instant on, shatter resistance and mercury free.



**Estimated Energy Cost: \$2.04 per year**



## Direct Replacement

Simply plug and play!

\*Note: Design, features and specifications subject to change without notice. Some features may not be available on all models. Please visit [www.eurilighting.com](http://www.eurilighting.com) or call 1-888-743-5766 for more information.

## Specifications

Input Power	Input Voltage	Lumen Output	Beam Angle	Center Beam	CCT
17 W	AC120-277 V	2200 lm	150°	N/A	5000 K
CRI	Luminous Efficacy	Power Factor	Input Current	Base/Cap	Lamp Lifespan
80	129 lm/W	0.9	0.287 - 0.129 A	G13	50,000 Hrs.

### Product Features

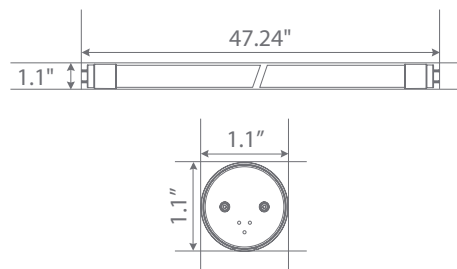


Energy Efficient

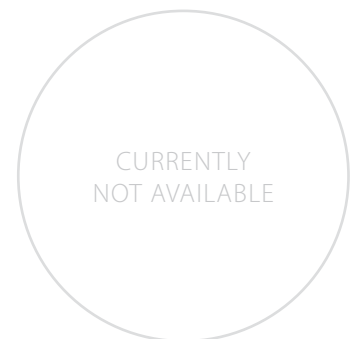


Damp Rated

### Product Dimensions



### Product Photometric Data



**Euri Lighting** | A Division of **IRTRONIX** Inc.