



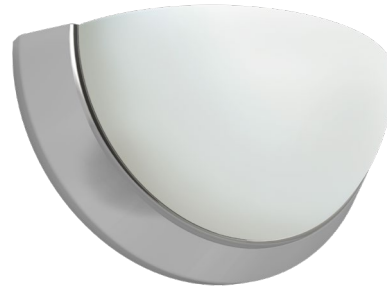
# LED EIN-WL50BN-1020cec



11" LED Indoor Wall Sconce Light/Brushed Nickel Bezel & Acid-Etched Glass Lens

## Product Description

Combining contemporary with classic style, this Euri Lighting decorative wall light features clean, Brushed Nickel housing and an acid-etched, ribbed glass bowl. Only 9 Watts and dimmable, this LED wall sconce light guarantees a long lifespan and unbeatable illumination in Warm White (2700K).



RoHS



**Estimated Energy Cost:** \$1.08 per year

**\*Note:** Design, features and specifications subject to change without notice. Some features may not be available on all models. For more information please visit: [www.eurilighting.com](http://www.eurilighting.com) or call 1-888-743-5766

(Contains 1 LED Bulbs per box.)

Integrated LED Fixture

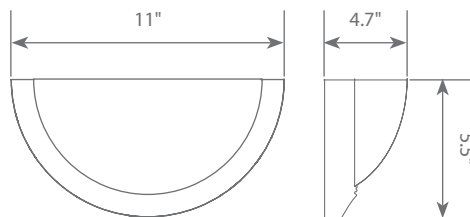
## Specifications

Input Power	Input Voltage	Lumen Output	Beam Angle	Center Beam	CCT
9 W	120 V	810 lm	180°	N/A	2700 K
CRI	Luminous Efficacy	Power Factor	Input Current	Base/Cap	Lamp Lifespan
90	90 lm/w	0.9	N/A	E26	25,000 Hrs.

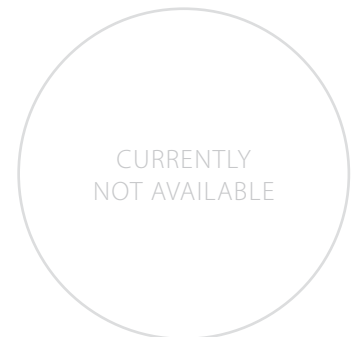
### Product Features

- Dimmable
- Energy Efficient
- Damp Rated

### Product Dimensions



### Product Photometric Data



Euri Lighting | A Division of ITRONIX Inc.

20900 Normandie Avenue Bldg. B Torrance, CA 90502 | Tel: 310.787.1100 | Fax: 310.787.1166 | [www.eurilighting.com](http://www.eurilighting.com)  
 ©2020 Euri Lighting. All Rights Reserved