



LED EIN-WL51WH-1020cec



11" LED Indoor Wall Sconce Light/White Housing & Acid-Etched Glass Lens

Product Description

Combining contemporary with classic style, this Euri Lighting decorative wall light features clean, White housing and an acid-etched, ribbed glass bowl. Only 9 Watts and dimmable, this LED wall sconce light guarantees a long lifespan and unbeatable illumination in Warm White (2700K).



RoHS



Estimated Energy Cost: \$1.08 per year

(Contains 1 LED Bulbs per box.)

Integrated LED Fixture

***Note:** Design, features and specifications subject to change without notice. Some features may not be available on all models. For more information please visit: www.eurilighting.com or call 1-888-743-5766

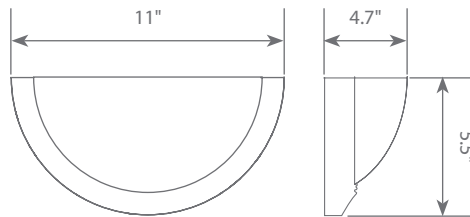
Specifications

Input Power	Input Voltage	Lumen Output	Beam Angle	Center Beam	CCT
9 W	120 V	810 lm	180°	N/A	2700 K
CRI	Luminous Efficacy	Power Factor	Input Current	Base/Cap	Lamp Lifespan
90	90 lm/w	0.9	N/A	E26	25,000 Hrs.

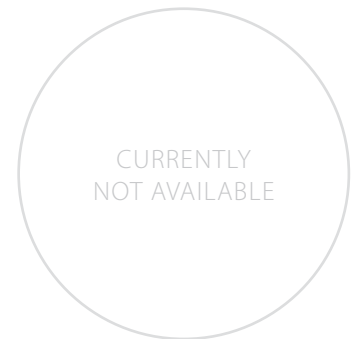
Product Features

- Dimmable
- Energy Efficient
- Damp Rated

Product Dimensions



Product Photometric Data



Euri Lighting | A Division of ITRONIX Inc.

20900 Normandie Avenue Bldg. B Torrance, CA 90502 | Tel: 310.787.1100 | Fax: 310.787.1166 | www.eurilighting.com
 ©2020 Euri Lighting. All Rights Reserved