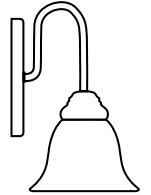
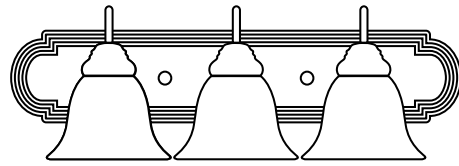




Questions?

For customer service please call us at 1-888-743-5766
Office Hours: 8:00 a.m. – 5:00 p.m. PST Monday-Friday



PLEASE REVIEW THE INSTRUCTIONS AND WARNINGS LISTED BELOW PRIOR TO PROPER INSTALLATION

WARNINGS	CAUTIONS
<ul style="list-style-type: none"> • Risk of fire / electrical shock • LED Fixture installation requires knowledge of luminaire electrical systems. • Risk of electric shock – disconnect power at source before installation • Do not make or alter any open holes in an enclosure of wiring or electrical components during installation. • If lamp or luminaire exhibits abnormal operation (buzzing, flickering, minimal light, etc.), turn off power, remove fixture and contact us. For more information please visit www.eurilighting.com or call our toll-free number 1-888-743-5766. • Wear gloves to prevent cuts/abrasions from sharp edges when removing from carton, handling, and maintaining this fixture. 	<ul style="list-style-type: none"> • Suitable for use with dimmers. • Do not look directly at the operating LED Fixture. • Do not touch this product with wet hands. • Do not disassemble, repair, or alter lamp. • Designed for indoor applications only. • Suitable for damp locations. • The luminaires shall be grounded. • Be careful not to touch the lamp pins to the metal housing when installing. • This Device is not intended for use with emergency exits or emergency lights. • Installation by a licensed Electrician recommended. • SUITABLE FOR OPERATION IN AMBIENT NOT EXCEEDING 40°C

SAFETY INSTRUCTIONS

1. Read instructions carefully before attempting to install this light.
2. Disconnect power before installing or servicing.
3. This fixture must be wired in accordance with the local codes and ordinances.

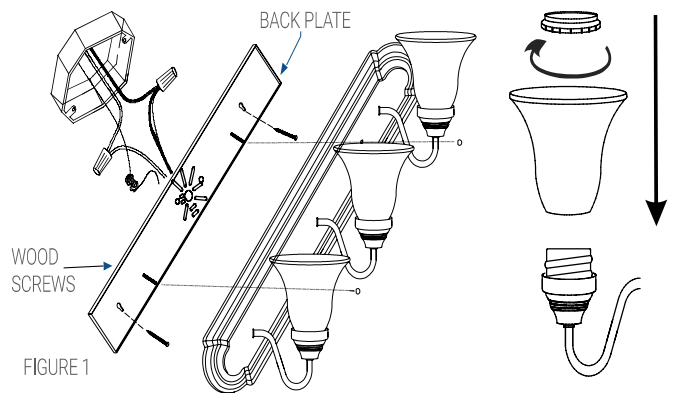
ASSEMBLY

- Carefully remove the fixture from the carton and check that all parts are included, as shown in **Figure 1**.

Be careful not to misplace any of the screws or parts which are needed to install this fixture.

1. Remove the plastic bushing from the backplate.
2. Install Romex/Bx connector to the backplate.
3. Feed house supply wires through Romex/Bx connector and secure
4. Make wiring connections as described in the steps that follow, and tuck the wires between the faceplate and backplate.

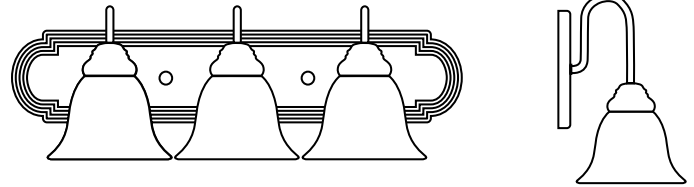
Figure 1.





Questions?

For customer service please call us at 1-888-743-5766
Office Hours: 8:00 a.m. – 5:00 p.m. PST Monday-Friday



PLEASE REVIEW THE INSTRUCTIONS AND WARNINGS LISTED BELOW PRIOR TO PROPER INSTALLATION

INSTALLATION INSTRUCTIONS

INSTALLATION TO AN OUTLET BOX

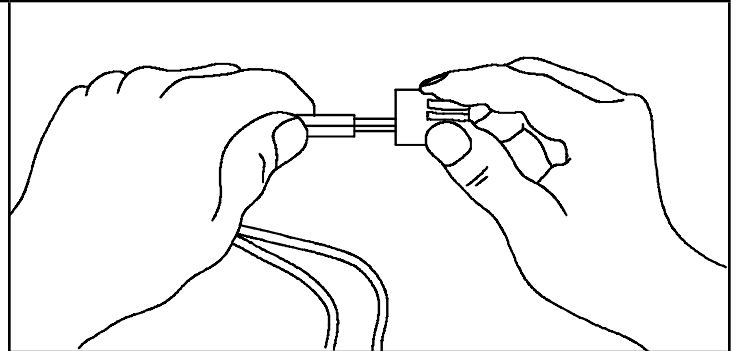
STEP 1: Make appropriate holes in the backplate, if applicable, to correspond with the holes in the outlet box.

STEP 2: Push the socket wires through the plastic bushing.

- STEP3:**
1. Take note of the color of the wire on your fixture. Identify which group of wires falls into and connect the wires according to the directions below.
 2. Take your fixture wires from group A and place evenly against the black wire from the outlet box. Do not twist wires together before using wire connectors.
 3. Fit a wire connector (not supplied) over the wires and thread the connector clockwise until you feel a firm resistance.
 4. Gently try to remove the wires from the connector. If you can remove the wires, carefully re-do steps B and C, as above, and check again for a firm connection.
 5. Connect the fixture wire from group B to the white wire from the outlet box in the same manner.

STEP4: Grounding Instructions: The green grounding screw is to be inserted into the hole with two raised dimples provided on the backplate. Wrap the ground wire from the fixture and the ground wire from the outlet box (bare metal or green insulated wire) around the green grounding screw on the backplate.

NEVER CONNECT GROUND WIRE TO BLACK OR WHITE POWER SUPPLY WIRES.

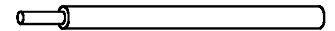


GROUP A: CONNECT TO BLACK

GROUP B: CONNECT TO WHITE

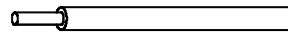
BLACK

WHITE



*PARALLEL WIRE (ROUND & SMOOTH)

*PARALLEL WIRE (SQUARE & RIDGED)



FINAL ASSEMBLY

MAKE SURE NO BARE WRES CAN BE SEEN OUTSIDE WIRE CONNECTORS

NOTE:
FIXTURES THAT EMPLOY A GROUNDED TYPE RECEPTACLE ARE NOT INTENDED FOR CONNECTION TO A TWO WIRE UNGROUNDED SOURCE OF SUPPLY

NOTE:

WHEN PARALLEL WIRE IS USED, THE TRACER WIRE IS SQUARE SHAPED OR RIDGED, AND THE LESS TRACER WIRE IS ROUND SHAPE OR SMOOTH (SEEN BEST WHEN VIEWED FROM WIRE END). TO SEPARATE WIRES, GASP THE ENDS OF EACH WIRE AND PULL APART.